

4G Vehicle Monitoring Terminal



Model No.: JX17

Product Name: 4G AI Dashcam

Product overview

It is a comprehensive automobile active safety product integrating satellite positioning, video monitoring and active safety functions.

This product meets the needs of fleet monitoring, management, driving safety and regulating driving behavior. Based on advanced

Deep learning technology, advanced driver assistance system (ADAS), driver monitoring system (DMS), lane change assistance.

Active safety functions such as (LCA) can be applied to complex driving scenes to meet the needs of safety and driving.

The timeliness and efficiency of transportation improve the overall user experience. AI technology is integrated into the driving experience of vehicles.

Further standardize drivers' safe driving behavior.

- 1、 1. The dangerous driving reminder issued by the active safety AI device is only a voice reminder and cannot be replaced.

Driver's driving decision and operation;

2. The dangerous driving warning issued by active safety AI equipment is based on computer vision and depth.

Learning technology development, can not guarantee 100% recognition accuracy. For pre-amp,

The accuracy of obstacle recognition is different under different road conditions and weather conditions.

3. If used properly, this equipment aims to enhance situational awareness. If used improperly,

You may be distracted by the display screen, which may lead to an accident and cause serious personal injury or death.

Do not attempt to access the information stored on the device or change the device settings while driving. Only when your car

Only when the vehicle is stationary and you are parked in a safe place in compliance with local laws can you operate the equipment.

Always keep an understanding of the surrounding environment, and don't stare at the display screen or be distracted by it.

Focusing on the display may cause you to miss obstacles or dangers.

Use this equipment at your own risk.

2、

1. When installing equipment on the vehicle, do not place the equipment in a place that hinders the driver's sight.

View or interfere with the operation control of the vehicle, such as steering wheel, pedal or transmission lever.

Do not put loose items on the dashboard of the vehicle.

Do not place the equipment in front of or above any airbag.

2. In some countries or regions, it is forbidden or restricted to play videos on devices with drivers' visible display screens.

3. Precautions

Please keep the equipment dry. Do not leave the equipment and cables in a humid environment or operate the equipment with wet hands.

In order to avoid short circuit, corrosion failure and electric shock.

2. Do not make the equipment subject to strong impact or vibration, so as not to cause equipment failure.

3. Do not place the equipment and power supply at too high or too low a temperature, otherwise it may lead to equipment failure;

4. Do not bump, throw or prick the equipment, and avoid falling or squeezing the equipment.

5. Please don't use power and data cables that are not officially approved or provided.
6. Do not disassemble the equipment and accessories without authorization, otherwise the equipment and accessories will not be covered by the warranty.

1. Product features

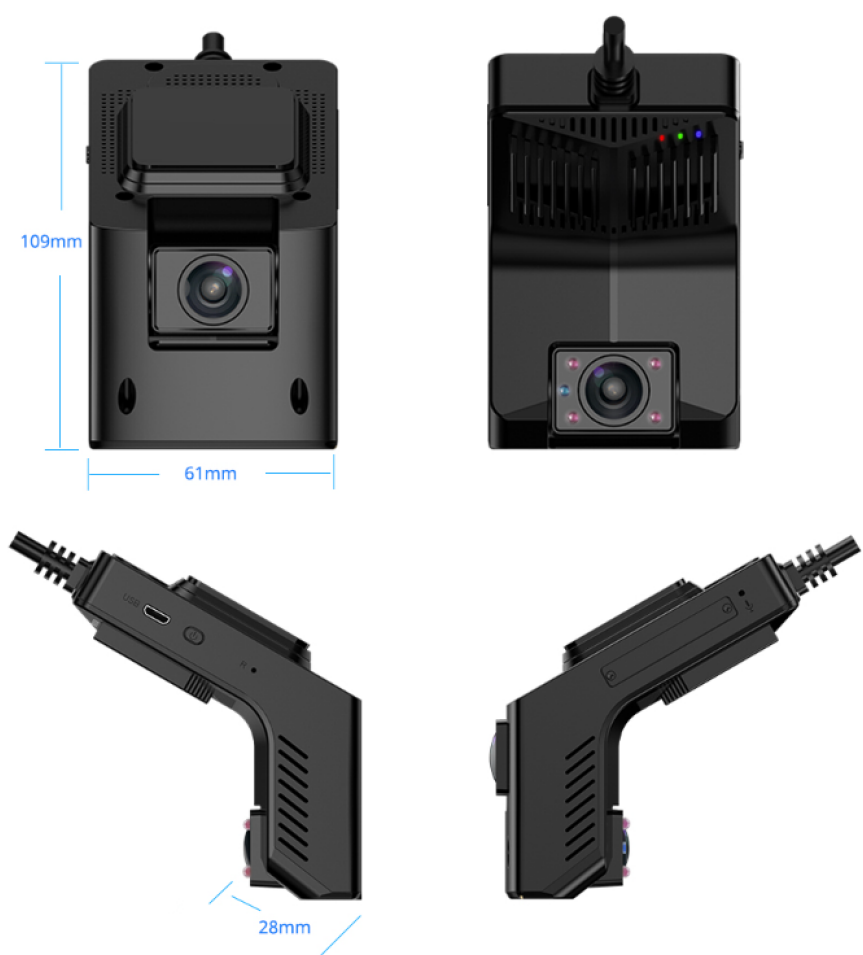
1. Real-time positioning;
2. Integrated video inside and outside the car;
3. 4G remote live broadcast, real-time monitoring of vehicle status;
4. Simple installation, no driving sight blocking;
5. High-speed 4G network, WiFi;
6. TS streaming video, the last 1s image is reserved due to unexpected power failure;
7. Parking monitoring, anti-theft and anti-scratching;
8. Collision warning;
9. Fatigue driving;
10. Smoking warning
11. Call the police
12. Driving alarm when the driver does not look forward (look left and right, look down)
13. Vehicle trajectory;
14. WiFi direct connection, real-time back to watch video;
15. Computer-side remote monitoring, intercom, look back and send information;

2, product technical parameters

Item	
cpu	Dual core, 1.2GHz
internal storage	2Gb 16-bit DDR3(L) memory
Wi-Fi	support
global positioning system (GPS)	support
G-Sensor	support
Video/audio	
Supported video formats	H265 / H264
Supported audio formats	PCM, audio
Internal speaker	Support, mono
Built in MIC	Support, mono
front-facing camera	

Sensor type	1/2.9 ",2MP CMOS sensor
FOV	Depth: 125 Height: 105 Vertical: 58
resolution ratio	1920*1080
Video frame rate	1080p @ 30fps
Inward camera	
joggle/interface	1/3 ",2MP CMOS sensor
FOV	Depth: 120 Height: 100 Vertical: 45
resolution ratio	1920*1080
Video frame rate	1080p @ 30fps
infrared emitting diode	support
OS	Linux
power	ACC or cigarette power tag12-24V
save	TF card, maximum 256GB, Class10 and above, FAT32.

3. Appearance of product drawing



4, product use guidance

1. Insert Micro SD card and SIM flow card according to the screen printing of the shell.
2. The power supply is 12V, and the red light is on (lasting about 10s), and 24V needs to be informed in advance.
3. Refer to the equipment indicator light to judge its working state. See the indicator light definition below for details.



4, indicator light definition

Equipped with LED	colour	sign	Product description
Video recording	Red and blue	Blue is always bright	Video is not recorded
		Red is always bright.	Video recording
Wi-Fi connection	yellow	OFF	Wi-Fi not connected.
		Continuous light	Wi-Fi is connected.
GPS signal	green	OFF	No GPS signal
		Continuous light	GPS has a signal



5, key definition

1. Fuselage key
 - 1.1 Short press-broadcast WIFI hotspots and equipment working status.

- * When the device is requesting to bind the mobile APP, short press is the "OK" key for binding.
- * Press and hold until the red light starts flashing to restore the factory settings.

1. 2 Restart key (hole position screen printing is "R")

2. SOS button

2. 1 Short press-upload alarm information to the platform and capture the front and rear camera pictures.

6, video storage instructions

1. Please use a Micro SD card with a capacity of 16GB~256GB and a reading and writing speed of Class10 or above.
2. In order to ensure that more driving videos can be stored, format the Micro SD card in the app before use to avoid other files in the card taking up space.

7, recorder function

1. After the machine is turned on, the equipment automatically starts recording. The front camera and the infrared camera in the car are both 720P. With advanced video processing technology, dynamic shooting during high-speed driving can be easily completed, and the recorded video can be covered circularly. There is no need to manually clean the memory card, and the vibration video can be automatically locked to prevent loss.

8. Parking monitoring

1. After the car is turned off, the equipment will automatically enter the parking monitoring mode.
2. When the car is hit by external force, the equipment will automatically alarm and upload pictures and location information to the platform.
3. Users can actively monitor the equipment in real time, capture pictures, capture videos, and talk to each other remotely through the platform.
4. In order to protect your car, when the equipment detects that the battery voltage is low after the car is turned off for a long time, it will automatically shut down and no longer consume the battery power to ensure that the normal ignition of the car will not be affected.

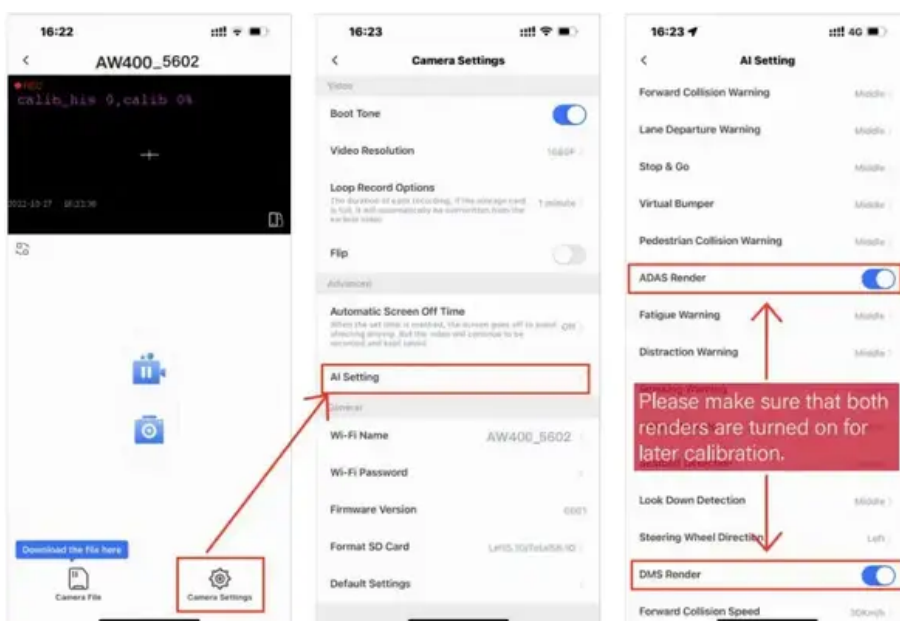
9. Configuration Description of JT808&1078 on Platform Side

1. Mobile phone scan code to download video cloud car APP:



2. Connect the mobile phone to the device WIFI (hotspot name: RW1-XXXX, initial password: 12345678), open the video cloud car APP and click [Recorder] for 5 consecutive times. After entering the production test interface, click [JT808/1078 Platform Configuration] to enter, and then set the corresponding parameters as shown in the figure below. After setting, click [Confirm Modification].

* In turn, the arrows in the following figure guide.



3. ADAS and DMS calibration

After connecting JX17, the photos taken in real time will be sent back.

Note: ADAS and DMS calibration will continue only when the moving speed is > 20km/h, otherwise the calibration progress (0~100%) will be suspended.



10. Set device parameters by SMS.

1. Set ip1,ip2,ip3, etc.

PULIAN*IP1*1.1.1.1*123#

PULIAN*IP2*1.1.1.1*123#

PULIAN*IP3*1.1.1.1*123#

PULIAN*IP2BAK*1.1.1.1*123#

PULIAN*IP4*1.1.1.1*123#

PULIAN*905IP1*1.1.1.1*123#

PULIAN*905IP2*1.1.1.1*123#

2. Set parameters

Hibernation reporting interval

PULIAN*8103*27*60#

vehicle license plate number

PULIAN*8103*83* Su N12345#

3. Set the video file segmentation time.

2 minutes each.

PULIAN*AUTOSAVE*120#

Step 4 restart

PULIAN*8105*4#

Restore factory settings

PULIAN*8105*5#

5. Set the volume (Android range 0-15, 21 range 0-7)

mute

PULIAN*VOLUME*0#

Maximum volume

PULIAN*VOLUME*15#

6. SMS query terminal attributes (iccid, device model, software version, etc.)

PULIAN*8107#

7. Set APN by SMS (Example APN:scuiot User Name: 123 Password: 456)

PULIAN*APN*scuiot*123*456#

8. Turn off and turn on the electronic dog

PULIAN*EDOG*1#

11, common troubleshooting

The adhesive on the back of the bracket is not firmly adhered.	Check to ensure that the car glass is wiped clean, and the air between the adhesive and the glass is squeezed out, and the pressure is firm.
The equipment body shakes and the video is skewed.	Check that the bracket is buckled with the driving equipment and the bracket is stuck. Is the sticker parallel to the front of the car?
Video is blurred and dark.	Check whether the lens surface and windshield are clean and free from dirt. The lens angle should not be adjusted too high, and the lower edge of the video can be photographed at the bottom of the windshield.
Unable to stop monitoring	Check the wiring sequence of the power cord. B+ is connected to the battery long-term insurance, and ACC line is connected to the automobile ACC insurance.
The device can't be turned on or can't work normally.	Check whether the wiring is correct. Check whether the fuse on the wire is intact. Restart the machine by short pressing the reset key of the hole beside the word R on the side of the equipment with the card-taking pin. Restore factory settings
The blue light flashes after the equipment works.	Check whether the SIM card is installed and whether the traffic is sufficient.
The green light flashes after the equipment works.	Check that the GPS antenna plug is connected properly. Check whether the antenna placement position is blocked.
The red light flashes after the equipment works.	Check whether TF card is inserted properly. Check whether TF card is Class10 (C10 is printed on the card surface). Format or replace TF card
Forgot the WiFi password	Press the device button briefly to broadcast the hotspot name and password, and confirm that the password entered is correct.
APP cannot preview the device screen.	Check that the phone is properly connected to the device WiFi. Forcibly close the mobile APP and reopen the APP.

12, Matters Needing Attention

1. The recorder is a driving aid product for recording the external images of vehicles, and it does not have the function of

ensuring the driving safety of users. In the process of using the recorder, the company has nothing to do with the driving accident caused by product failure, information loss and operation of the recorder and any losses caused by it.

2. Some functions of the recorder may not work properly because of differences in vehicle conditions, driving modes and driving environment. Power failure, use in an environment beyond normal temperature and humidity, collision, memory card damage and other reasons may lead to abnormal video recording, and the recorder does not guarantee that all videos can be recorded completely under any circumstances.

3. Please install the recorder correctly, and don't block the driver's sight and airbag, otherwise it will easily cause product failure and personal injury.

4. Please keep the recorder away from strong magnetic field, which may damage the recorder.

5. It is forbidden to use the recorder in high temperature above 70°C and low temperature below -20 C.

7. Do not subject the recorder to strong impact or vibration, so as not to damage the product, resulting in dysfunction or unusable.

8. Do not use chemical solvents or detergents to clean the recorder.

9. Please use the recorder within the scope permitted by law.