

TK002(J14) MANUAL FOR COMMAND LIST

1.



Com_English.exe

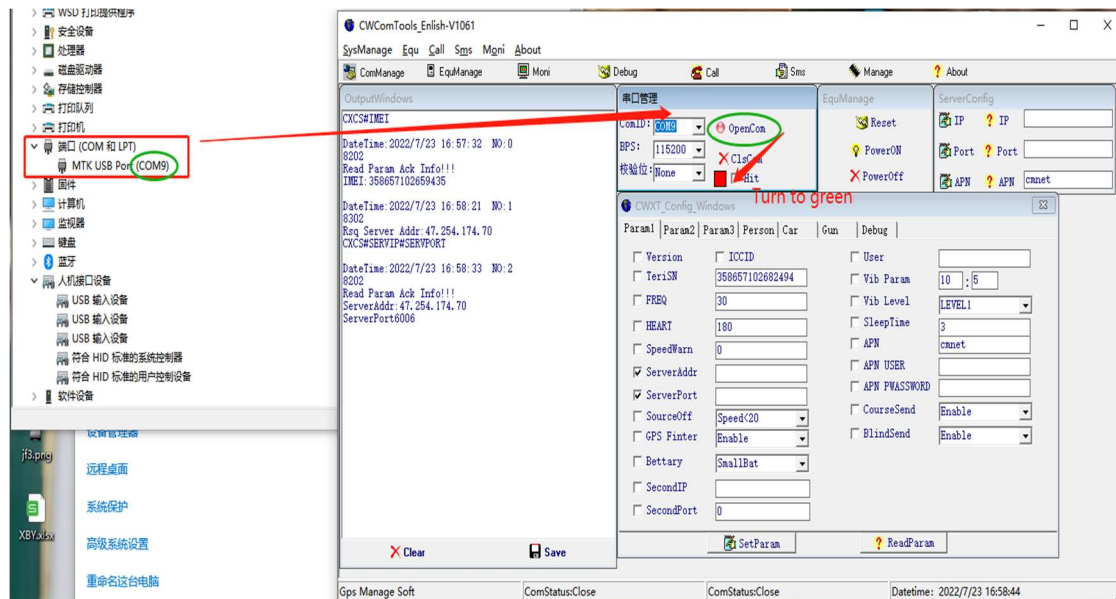
2. OPEN IT VIA ADMIN



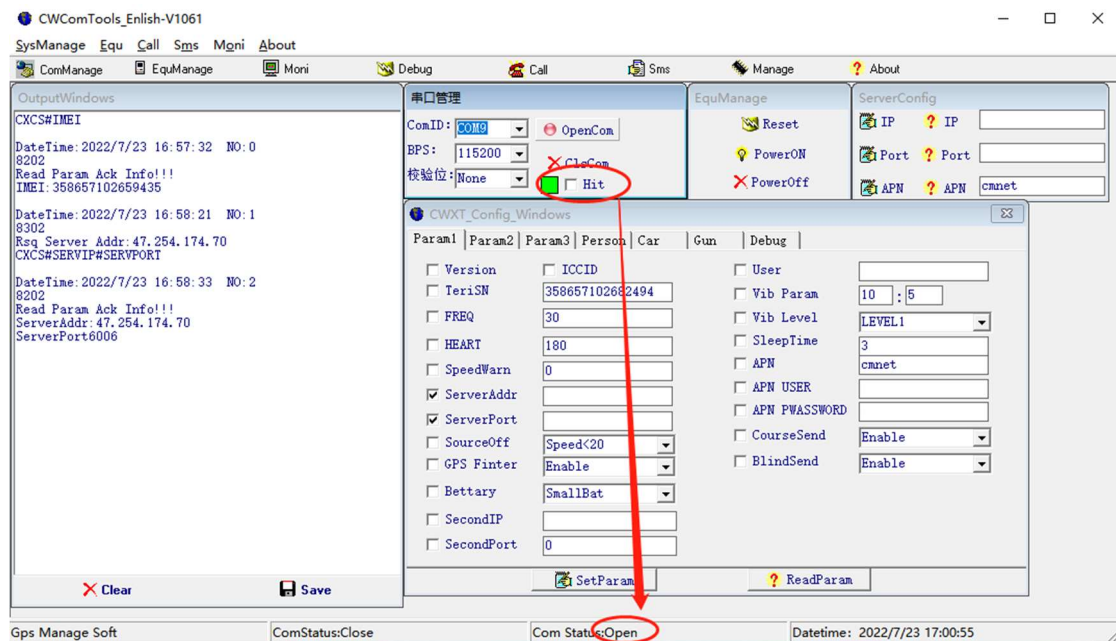
3. CONNECT TO COMPUTER and turn on battery switch(or connect power supply)



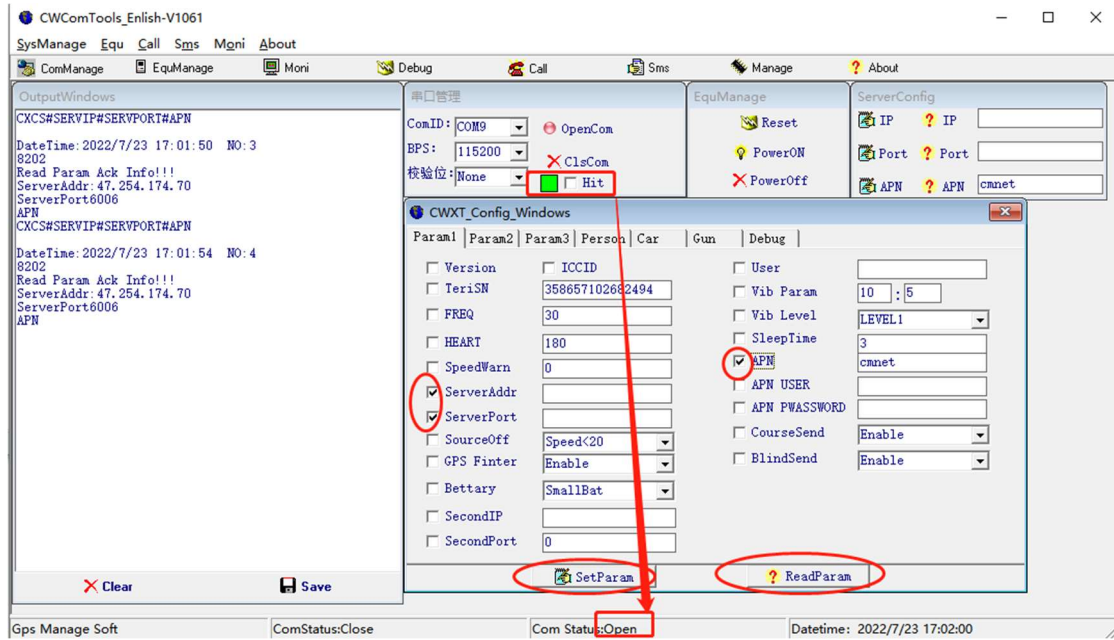
4. CHECK THE PORT



Check port (com9)-> choose com9 port-> click opencom->red change to green-> comstatus: will be open



Choose serveraddr,serverport,apn



ReadParam: read the parameters

SetParam: set new parameters.

When you change one new device, click clscm to close port, then click opencom again.